

RAMFILL

STEEL SLEEVES

**(FULL CIRCUMFERENCE
TYPES 'A' & 'B')**

**FOR
IN-SERVICE
PIPELINES**



WE SPECIALIZE ON THE FOLLOWING SOLUTIONS:

**COATINGS FOR MECHANIC AND
CORROSION PROTECTION OF STEEL PIPELINES**

**COMPOSITE- AND STEEL-SLEEVES FOR
REPAIR OF HYDROCARBON PIPELINES**

**SPECIAL DESIGN SLEEVES FOR LEAKING
OR NON-LEAKING, TEMPORARY
ACCESORIES, ILLEGAL TAPS, AND OTHER
INTEGRITY DEFICIENCIES**

RAM-100 – PRODUCTS

LIQUID EPOXY COATING (100% SOLIDS):

- **RAM-100**
- **RAM-100 PLUS SP +
DQP-100**

COMPOSITE AND STEEL REPAIR SLEEVES:

- **RAMFILL PLUS NM**
- **RAMFILL – MC**
- **RAMFILL – RS**
- **RAMFILL – B+RE**



RAM-100 COATING

MANUAL
APPLICATION
FOR IN-SERVICE
PIPELINES OF
ALL SIZES



RAM-100 SP PLUS COATING

ON-SITE APPLICATION BY
SPRAY GUN W/AIRLESS PUMP



RAMFILL PLUS NM

COMPOSITE WRAP
MADE OF RAM-100
EPOXY RESIN AND
HIGH RESISTANCE
SYTHETIC MESH FOR
ON-SITE INSTALLATION
WITHOUT WELDING TO
THE PIPELINE OR
SHUTTING DOWN
OPERATIONS



RAM-100 MANUFACTURES STEEL SLEEVES FOR PIPELINE REPAIRS:



TYPE 'A' SLEEVES

FOR PERMANENT SOLUTIONS OF EXTERNAL NON-LEAKING
INTEGRITY DEFICIENCIES

TYPE 'B' SLEEVES

FOR PERMANENT SOLUTIONS TO REPAIR AND REINFORCE
PIPELINES WITH LEAKING OR NON-LEAKING OLD/WORN
ACCESORIES AND OTHER MAJOR INTEGRITY DEFICIENCIES

FOR SPECIAL DESIGNS TO FIT UNIQUE CONDITIONS

TYPE 'A' SLEEVES

FULL ENCIRCLEMENT SPLIT
SLEEVES, MATCHING PIPE
SPECIFICATIONS FROM 2- TO
48-INCHES IN DIAMETER

MANUFACTURED FROM API
PIPING OR ASTM-CERTIFIED
STEEL PLATE MATCHING
CARRIER PIPE SPECIFICATIONS

INSTALLED WITHOUT WELD
APPLICATION TO THE PIPELINE



COMPLIANT WITH ANSI/ASME B31.4 &
31.8, ASTM, ISO AND PCC-2
STANDARDS AND SPECIFICATIONS

FOR PERMANENT SOLUTIONS OF
PIPELINES WITH UP TO 80% LOSS OF
WALL THICKNESS

TYPE 'B' SLEEVES



INSTALLED WITH LONGITUDINAL
AND CIRCUMFERENTIAL WELD
APPLICATION TO THE PIPELINE

RAM-100 EPOXY PASTE APPLIED TO
THE INTERNAL WALL OF THE PIPE
ELIMINATING VOIDS AND
PROMOTING ADHESION

PERMANENT SOLUTIONS FOR
INTERNAL OR EXTERNAL INTEGRITY
DEFICIENCIES WITH – OR WITH A
POTENTIAL FOR – LEAKS

TYPE 'B+RE' SLEEVES

FULL ENCIRCLEMENT STEEL SLEEVE
WITH ENLARGED DIAMETER AND
CONCENTRIC REDUCTIONS TO FIT
SNUGLY ONTO THE PIPE

RAM-100 LIQUID EPOXY RESIN
INJECTED TO ELIMINATE VOIDS AND
PROMOTE TRANSFERRING STRESS
FROM THE PIPE TO THE SLEEVE

PERMANENT SOLUTIONS FOR
MAJOR INTEGRITY DEFICIENCIES OR
SPECIAL CONDITIONS



RAM-100 – CERTIFICATIONS

OUR STEEL SLEEVES ARE
MANUFACTURED UNDER AN
ISO CERTIFIED QUALITY SYSTEM
ISO 9001:2008
NMX-CC-9001-IMNC-2008

ISSUED BY
AMERICAN TRUST REGISTER, S.C.
CERTIFICATE NUMBER:
ATR-0779
(12/14/11)



Registro de Certificación Certificate of Registration

El presente certifica que el Sistema de Gestión de:
This certifies that the Management System of:

RAM-100 DEL SURESTE, S. A. DE C. V.

Lateral autopista México-Puebla, km 28.1, Colonia San Isidro, Valle de Chalco
C.P. 56617, Estado de México.

ha sido evaluado por ATR y se encuentra conforme con la(s) siguiente(s) norma(s):
has been evaluated by ATR and found in agreement with following standard(s):

NMX-CC-9001-IMNC-2008 (ISO 9001:2008)

Alcance: / Scope of registration:

Manufacture, Sale and Application of liquid high solids epoxy coating to steel pipe, manufacture and installation of non-metallic mechanical reinforcements for pipes, Manufacture of metal reinforcement type A, Manufacture of metal reinforcement bipartite type B (Container Boiler pressure type) manufacture of metal reinforcement RS and manufacturing bipartite type of metal reinforcement for illegal taps bipartite TC type; drivers for installation in operation hydrocarbon products.

Annex AC779 is an integral part of this document.

Número de Certificado: 0779
Certificate Number:
Fecha de Expedición: 10-12-14
Issue Date:

Accreditation No. 34/11 Effective from 2011/05/13

Luis E. López Batista
Director General, ATR / President, ATR



Nº 2874

Este certificado tendrá validez de acuerdo a los fechas de caducidad indicadas en la(s) etiqueta(s) que se encuentran al reverso del presente.
This registration will only be valid according to the expiration dates indicated in the stickers found in the back of this document.

American Trust Register, S.C., empresa ubicada en: Paseo de la Hacienda de Echegaray No. 40, Col. Bosque de Echegaray, C.P. 53310, Naucalpan de Juárez, Estado de México.

En caso de aclaración acerca del alcance o vigencia, favor de comunicarse a: / In case of clarification about scope of registration or applicability, please contact:
American Trust Register, +52 55 5236 7383 • 5236 7384

RAM-100 – CERTIFICATIONS

CERTIFICATE OF COMPLIANCE FOR THE
MANUFACTURING AND APPLICATION PROCESSES
OF COMPOSITE AND STEEL REINFORCEMENT
SLEEVES ISSUED BY **ABS GROUP**



CERTIFICATE OF COMPLIANCE FOR THE
FUNCTIONALITY AND PERFORMANCE OF
COMPOSITE AND STEEL REINFORCEMENT
SLEEVES ISSUED BY **IMP (MEXICAN
INSTITUTE OF PETROLEUM)**

RAMFILL-MC

TYPE 'A' & 'B' SLEEVES

RAMFILL – MC



WE CAN MATCH ANY PIPE SPECIFICATION FROM
ASTM-CERTIFIED STEEL PLATE OR API PIPING

RAMFILL – MC

WE MAINTAIN STOCK OF
STANDARD LENGTH AND
DIAMETER STEEL SLEEVES TYPES
'A' & 'B' FOR PROMPT DELIVERY



RAMFILL-RS

TYPE 'B' SLEEVES

FOR GIRTH WELD
REINFORCEMENT

RAMFILL – RS

PATENT PENDING

(TYPE 'B' SLEEVE)

STEEL SLEEVE FOR
REINFORCEMENT OF
WELD DEFICIENCIES



RAMFILL – RS

PATENT PENDING

(TYPE 'B' SLEEVE)



CARBON-STEEL HALF
SOLES WITH A BOILER-
TYPE MIDDLE SECTION,
TO BE PRESSURE-FILLED
WITH RAM-100 LIQUID
EPOXY RESIN FOR
REINFORCEMENT OF
GIRTH WELD
DEFICIENCIES



RAMFILL – RS

PATENT PENDING

(TYPE 'B' SLEEVE)

PACKAGED AND DELIVERED WITH RAM-100 EPOXY COATING
FOR PROTECTION UNTIL THEY ARE INSTALLED



RAMFILL-B+RE

TYPE 'B' SLEEVES

SPECIAL DESIGNS
WITH EPOXY FILL

RAMFILL – B+RE

FULL ENCIRCLEMENT
STEEL SLEEVE,
BOILER-TYPE FOR
PRESSURE
CONTAINMENT,
FILLED WITH RAM-100
LIQUID EPOXY RESIN,
FOR INSTALLATION
WITHOUT STOPPING
OPERATIONS



RAMFILL – B+RE



TO REPAIR LARGER AND MORE SIGNIFICANT INTEGRITY DEFICIENCIES, PREVIOUS COMPOSITE OR SPLIT SLEEVES, CURVED, ELBOWS, OR 'T' SECTIONS OF PIPING, MAJOR DENTS, LEAKS, ILLEGAL TAPS OR UNIQUE CONDITIONS

RAMFILL – B+RE



CUSTOM MADE WITH CONCENTRIC REDUCTIONS AND
PRESSURE FILLED TO ELIMINATE VOID SPACE

RAMFILL – B+RE

FIELD-VERIFIED SPECIAL DESIGNS



RAMFILL – B+RE

FOR REPAIRS OF
OLD/WORN ACCESORIES



RAMFILL – B+RE

FOR PERMANENT REPAIR AND REINFORCEMENT OF OLDER
TEMPORARY SOLUTIONS



RAMFILL – B+RE

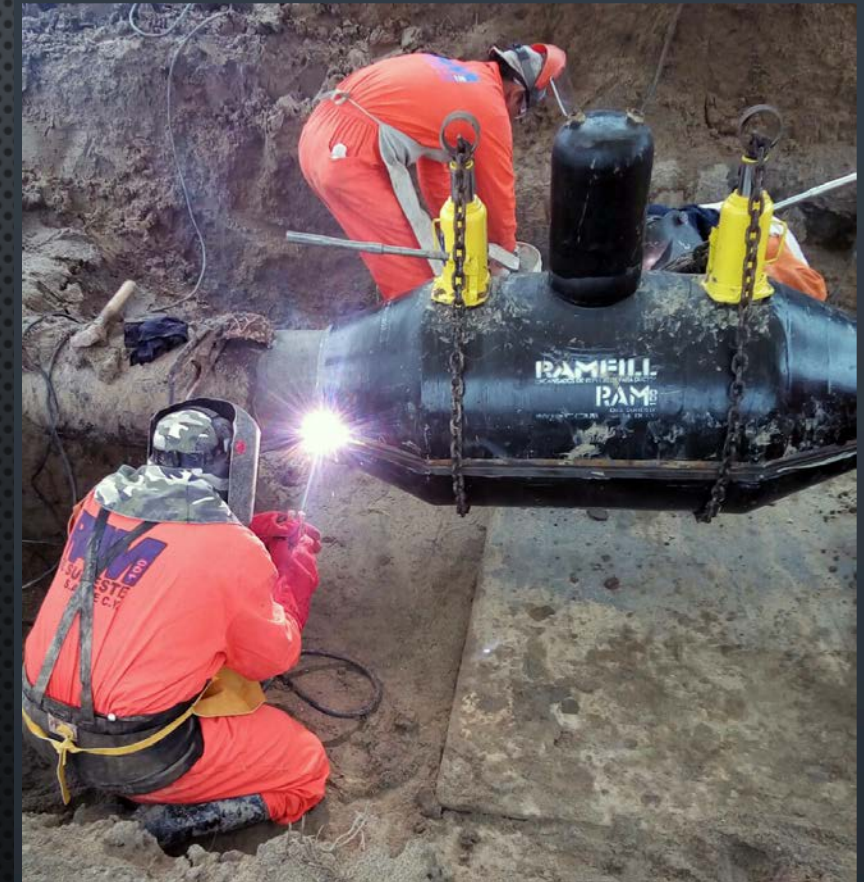
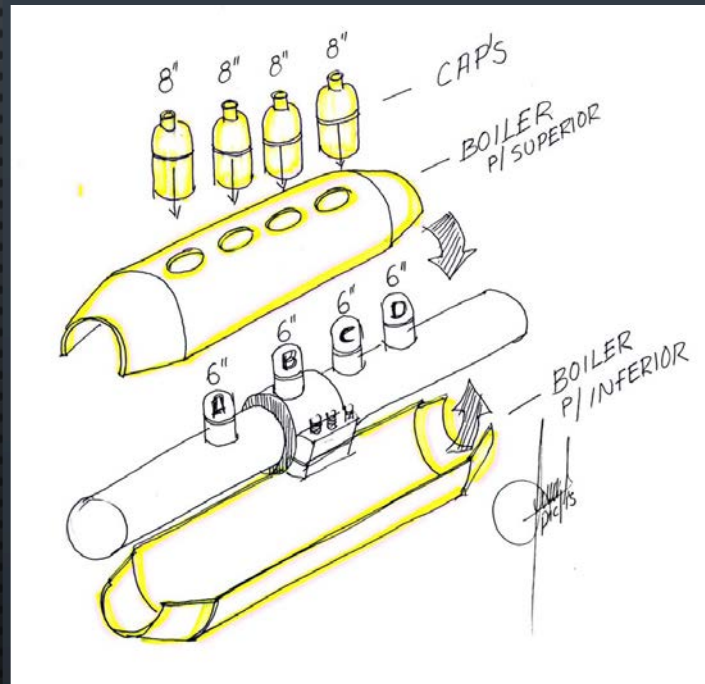
RAM₁₀₀
INTERNATIONAL, LLC

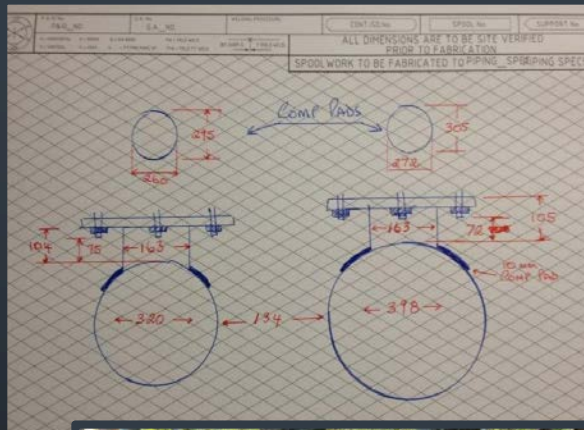
DESIGN AND INSTALLATION FOR REPAIRS
ON SUBSEA INFRASTRUCTURE



RAMFILL – B+RE

SPECIAL DESIGNS FOR IMMOBILIZATION
OF ILLEGAL TAPS WITHOUT STOPPING
OPERATIONS





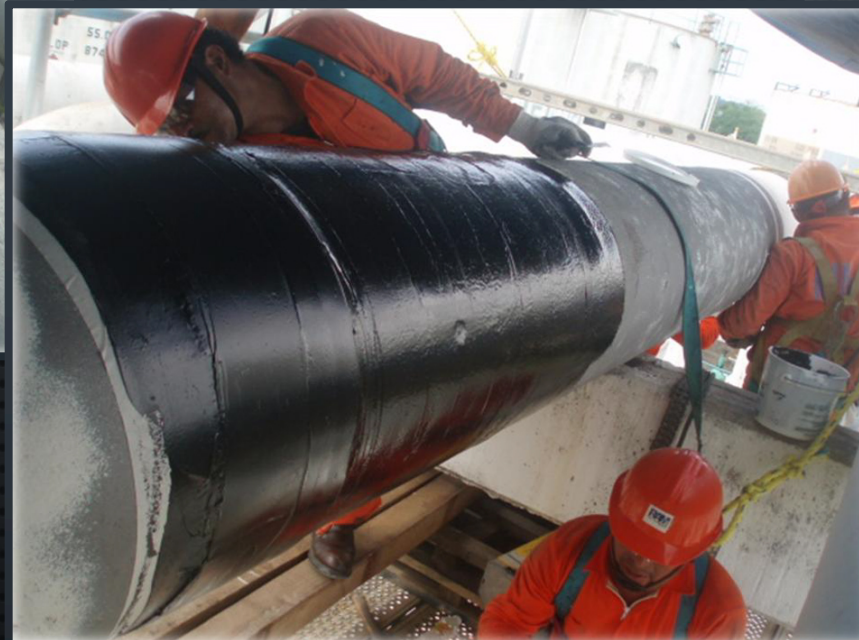
RAMFILL – B+RE

CUSTOM MADE DESIGNS TO FIT EXISTING CONDITIONS



RAMFILL – B+RE

SPECIAL DESIGNS TO REINFORCE ENTIRE DEFICIENT SECTIONS INCLUDING
EXISTING ACCESORIES, BENDS, PIPING, AND OTHER OBSTACLES



SAMPLES OF COMPLETED PROJECTS

RAMFILL-B+RE ON 14" DIAMETER PIPELINE



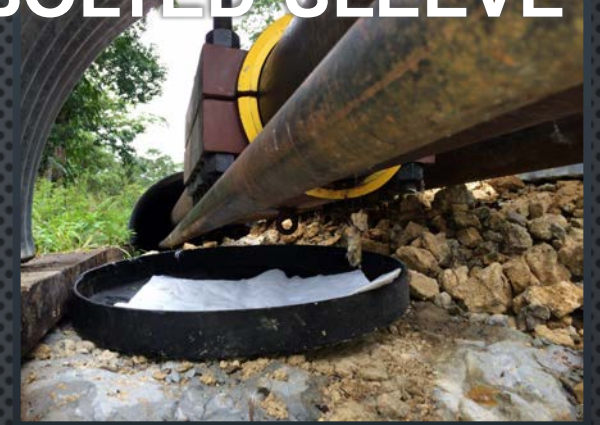
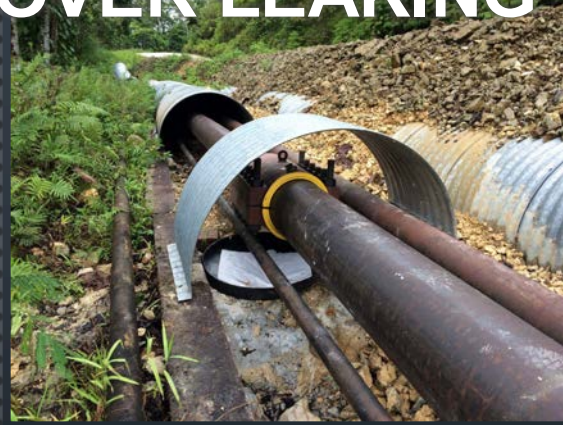
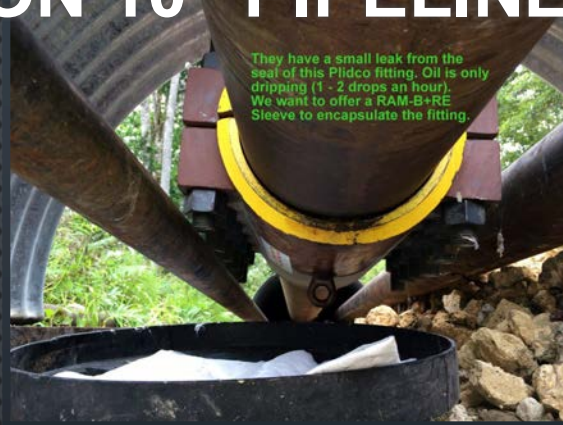
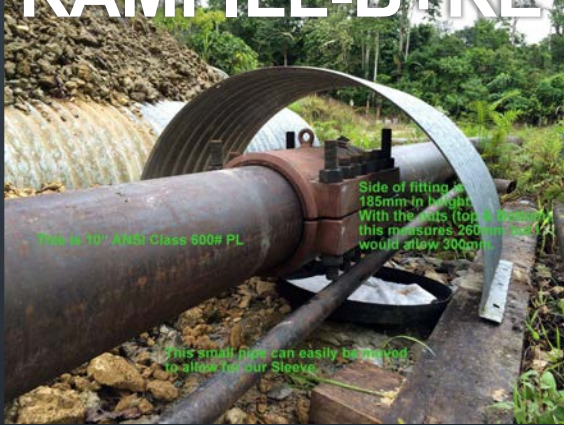
RAMFILL-B+RE ON 48" DIAMETER PIPELINE



RAMFILL-B+RE ON 36" DIAMETER PIPELINE



RAMFILL-B+RE ON 10" PIPELINE OVER LEAKING BOLTED SLEEVE



RAM-100 – USERS AND CLIENTS



RAM-100 – PRODUCTS

RAM-100[®] PRODUCTS ARE DESIGNED AND MANUFACTURED TO SERVICE THE OIL & GAS INDUSTRY PROVIDING REAL SOLUTIONS TO CORROSION PROBLEMS AND TO MAINTAIN AND REPAIR IN-SERVICE TRANSMISSION PIPELINES WITHOUT STOPPING OPERATIONS.

RAM-100[®] PRODUCTS ARE ALSO AN EXCELLENT ALTERNATIVE TO REPAIR SUBSTRATES EXPOSED TO ABRASIVE ORGANISMS OR AGGRESSIVE AGENTS, CONCRETE INFRASTRUCTURE, NEUTRALIZATION PITS, AND ANY SURFACE REQUIRING PROTECTION AGAINST CORROSION.

RAM-100 PRODUCTS
PROVIDE **SOLUTIONS** FOR CORROSION PROBLEMS



THANK YOU!



RAY A. MARTINEZ
PRESIDENT/CEO

4822 N SAM HOUSTON PKWY W, SUITE 100
HOUSTON, TX 77086

OFFICE: +1 (832) 917-1770 | MOBILE: +1 (480) 822-0614
TOLL FREE: (888) 396-4128 | FAX: (888) 890-6011
INFO@RAM100INTL.COM | WWW.RAM100INTL.COM

